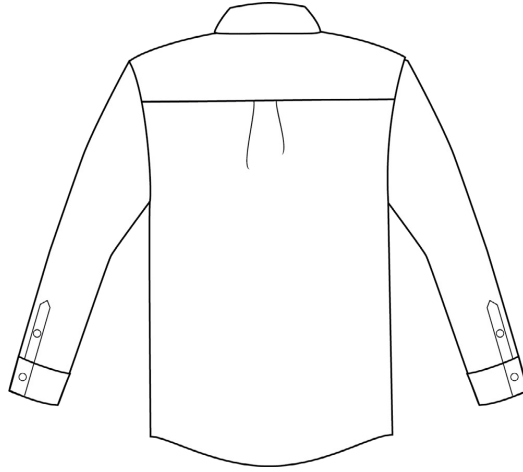
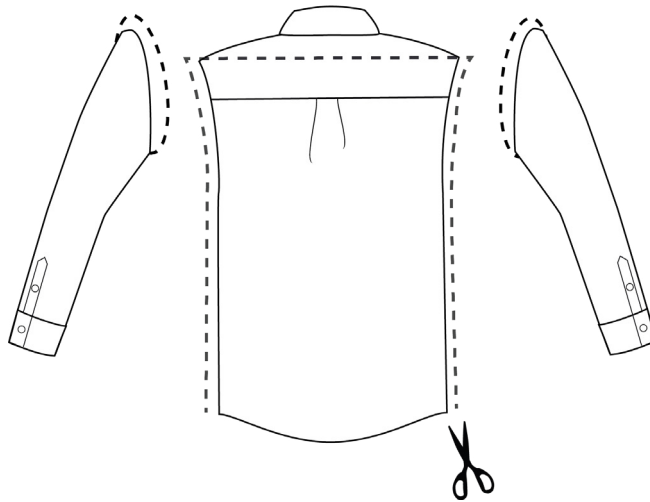


RE:WAIR

MAKE A BAG OUT OF AN OLD SHIRT.



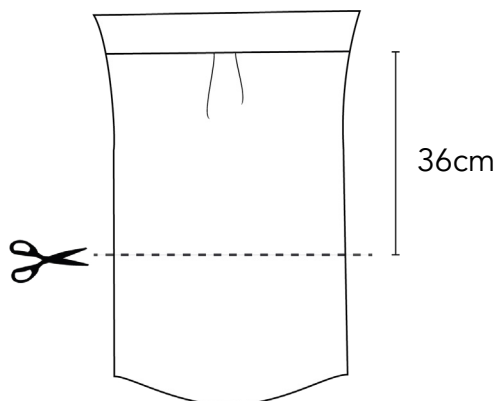
1



//Klip ryggen samt ærmer af skjorten.
*Inkluder eksisterende syninger fra ryggen.

//Cut the back and the sleeves off the shirt.
*Include existing stitching from the back.

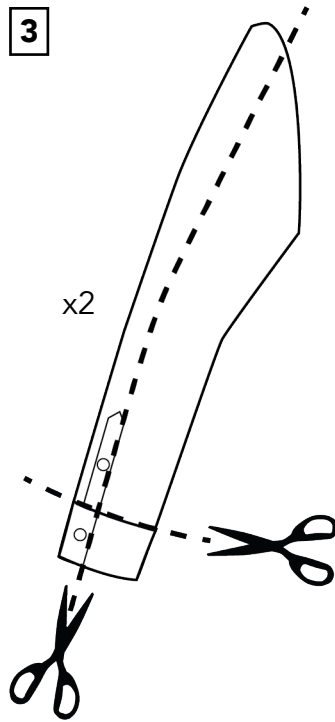
2



//Klip bunden af ryggen og gem til senere.

//Cut off the bottom of the back and save for later.

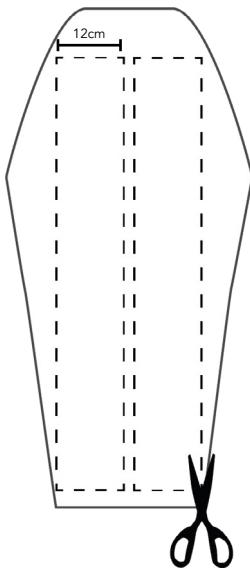
3



//Klip manchetterne af begge ærmer.
//Klip ærmerne op langs midten.

//Cut off the cuffs of both sleeves.
//Cut the sleeves up the middle.

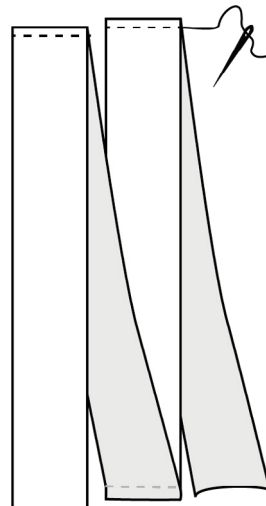
4



//Klip 2 strimler af hvert ærme.
*Strimlerne skal være så lange som mulig, men mindst 12 cm bredden.

//Cut two strings of each sleeve.
*The strings should be as long as possible, but not smaller than 12 cm in width.

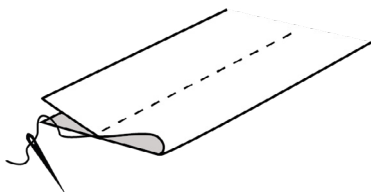
5



//Sy de 4 strimler sammen til 1 lang strimmel.
*ret mod ret.

//Sew all 4 strings together to make 1 long string.
*Print-sides facing.

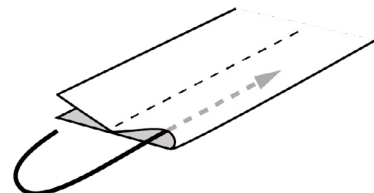
6



//Fold strimlen langs midten.
//Sy ned langs midten.
*ret mod ret.

//Fold the strap over the middle.
//Sew down the centre.
*Print-sides facing.

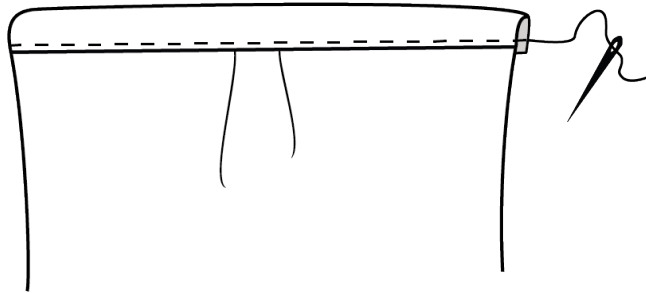
7



//Vend strimlen igennem hullet så printet kommer til at vende ud.
*Hjælpe midler såsom en sikkerhedsnål er nødvendig.

//Turn the strap through the tunnel so the print side comes to front.
*Helping tool such as a safety needle is necessary.

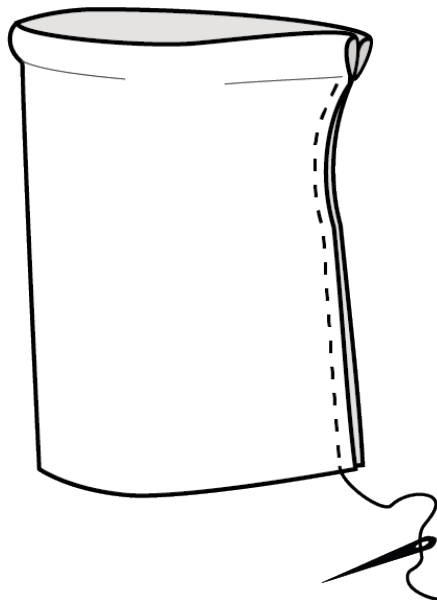
8



//Buk den øverste kant af ryg-delen ned til den eksisterende syning så det danner en tunnel.
//Sy denne tunnel fast langs den eksisterende syning

//Fold the top of the back-piece down to the existing back stitch so it makes a tunnel.
Close this tunnel by sewing along the existing stitch.

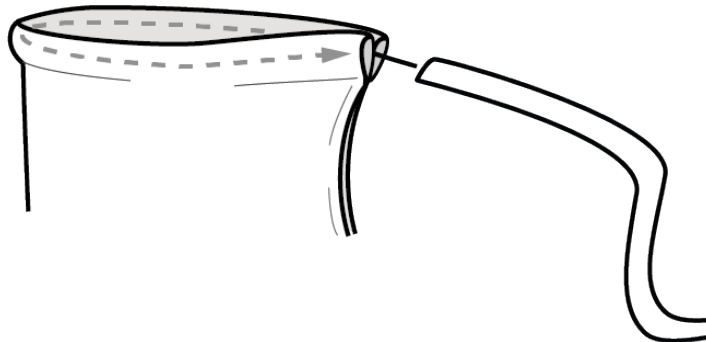
9



//Fold skjorten ret mod ret langs midten og sy langs de eksisterende syninger vi inkluderende i punkt 1.

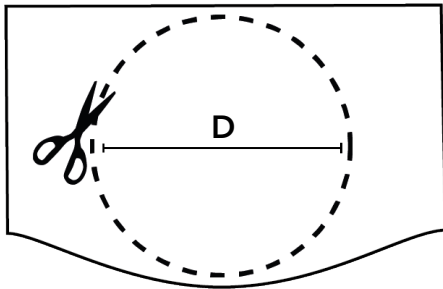
//Fold the shirt along the centre, prints facing each other, and sew along the existing stitches we included in step 1.

10



//Træk "ærme-stroppen" igennem tunnelen.
*Hjælpe midler såsom en sikkerhedsnål er nødvendig.

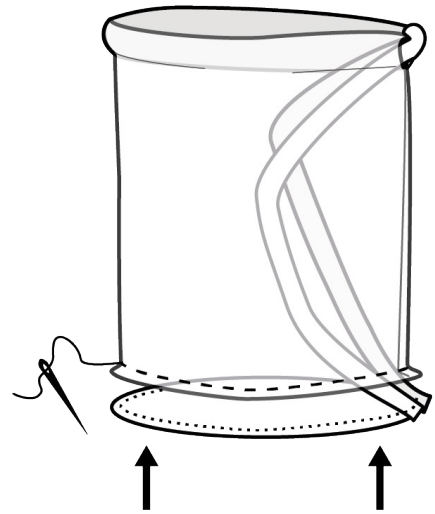
//Pull the strap through the tunnel.
*Tools such as a safety needle is necessary.

11

//Mål omkredsen (C) af bunden af tasken.
 //Brug formelen under til at finde diameteren af bunden af tasken.
 //Brug rygstykket vi gemte i punkt 2 til at klippe en cirkel.

$$\frac{C}{\pi} = D$$

//Measure the Circumference of the bottom of the bag.
 //Use the calculation above to locate the diameter of the bottom circle.
 //Using the back-piece we saved in step 2, cut a circle.

12

//Vend vrangen på tasken og sy bunden på tasken samtidig med at fastgøre enderne af stropperne i samme sy-runde.

//Turn the bag inside-out and sew the bottom on, including the loose ends of the straps in the same stitch.

Tadaaah!